

Bellydance WA

Booking Form:

Please complete and return to Bellydance WA or hand to your instructor at class.

Please note this form is **only valid for bellydance** classes

Name:

Postal Address:

Postcode:

Ph No:

A/H or Mobile:

Email:

Select Class Venue: Jndlp Mrly Scb Wwk

Select Class Day: Mon Tues Wed Thurs

Class Name/Time:

Amount Paid: \$

Tick here to receive regular updates by email.

Unsubscribe at any time by returning the email with "remove" in the subject line. Information collected will not be passed on to third parties.

Sign below to confirm you have read and understand the notes and conditions listed in this flyer.

Signed

Date

How to Pay

▶ **Cheque or Money Order to: Bellydance WA**

PO Box 270, Greenwood WA 6924

▶ **Direct Deposit to: Bellydance WA**

BSB: 036-080 Westpac Acct No: 206125

Include surname as a reference and follow up with an email

▶ **Credit Card** - Visa/Mastercard payments call Renate on

0402 243 504 or secure online payments at

www.bellydancewa.com.au/payment

Bellydance Course Discounts

▶ **2nd Course Discount** - \$20 off when booking a 2nd course in the same term, not transferrable to other terms/people

▶ **Children 17** and under attending adult classes receive a \$20 discount on full term fees (\$12 casual)

▶ **Concession Card Holders** - discounted prices are only available at certain classes as marked - a valid concession card must be presented at time of paying

▶ *Discounts only valid for programs managed by Bellydance WA*

Payments & Conditions:

Payment methods available: Cash, cheque, money order, direct deposit, secure online processing. Mobile EFTPOS service (debit, visa and master cards) available at classes with Renate.

Casual Attendance: subject to availability only.

Returned Cheques: any bank fees incurred will be charged to participants for payment on top of any class fees owed.

Cancelled Classes: where an advertised class is cancelled; a credit; full or partial refund of fees paid; or an alternative class will be offered to enrolled participants.

Missed Classes and Refunds: no refunds or catch-up classes are given for missed classes or non-attendance.

Details correct at time of printing and subject to change

Classes may be cancelled or combined if minimum numbers are not met

Placement is not guaranteed until full payment is received

Special Notes:

Risks: bellydance is a form of exercise and as such the normal risks of injury associated with exercise classes apply. While safe dance practices are adhered to in all classes, Bellydance WA accepts no liability for injury to participants.

Illness or medical condition: participants with existing medical conditions should discuss class format with their medical practitioner before attending classes and are reminded that they attend classes at their own risk. Participants should advise the instructor of any condition that may have an effect on their attendance (i.e. pregnancy, heart problems, or existing injuries) before commencing classes. Where a participant cannot continue with a class, a refund of fees paid may be made upon receipt of a medical certificate from a qualified medical practitioner. Fees will be adjusted to take into account any classes attended.

Medical Emergency: if it is necessary to call an emergency service (i.e. ambulance) on behalf of a participant then all costs associated with treatment and transport are to be met by the participant.

Venues are checked prior to each class to ensure activities are undertaken in an appropriate and safe environment; however we request that you advise the instructor of any potential problems you may notice.

Under 18?

Parents/guardians please note:

- ▶ It is compulsory for all children to be collected by an authorised adult from inside the venue.
- ▶ An emergency contact number must be supplied upon enrollment.
- ▶ A copy of our Working with Children Check verification is available on request.
- ▶ All conditions listed above apply to the parent or guardian of any participant under the age of 18.

Bellydance WA

Renate van Dordrecht

Ph: 0402 243 504

dance@bellydancewa.com.au

www.bellydancewa.com.au



Class Info

Start your journey with one of these classes for adults

Belly Rhythm: beginners bellydance with a focus on rhythm styles and easy dance patterns

Belly Groove: combines beginner and ongoing students in one class, ongoing students set separate challenges to strengthen basic movements, patterns and choreography

Diva Rhythm: specially designed for wise women (50+) and women of any age looking for a low impact option

Continue your journey with one of the following

Belly Raqs: explore the challenges of new styles and techniques and sharpen skills for performance

CT Review: for participants attending our Community Troupe Workshops, these review classes are designed to consolidate choreographies learnt and prepare for performance. If you don't attend the workshops, you can still participate in this class at the casual rate of \$15, check with Renate before attending.

And, something not strictly bellydance...

► **Zoomers Group Fitness:** cardio and strength conditioning for the over 50's with a zest for life! Talk to Renate for details

► **Zumba Gold:** Latin Grooves, easy moves, a perfect introduction to the fun dance fitness class that is Zumba. This one is low impact and great for beginners or those looking for an introduction to Zumba.

Venues

East Perth: Rod Evans Community Centre, Cnr Plain & Hay Streets, East Perth. Bookings: 9325 1507 - Tina

Joondalup: The Arena, Kennedy Dve
Mon-Winners Bar, Wed-Aerobic Rm

Morley: Morley Sport & Recreation Centre, Cnr Wellington Road & Mangini Street – in crèche

Scarborough: Scarborough Community Centre, Westview St

Warwick: Warwick Leisure Cent, Cnr Wanneroo & Warwick Rds



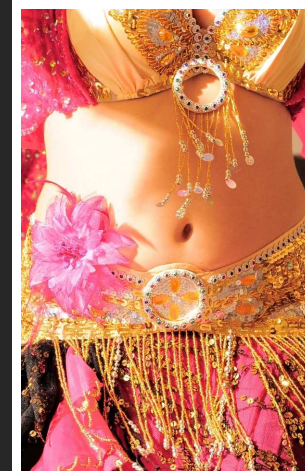
2012 Timetable Term 1

Day	Time	Class & Instructor	Venue	Price /Start Dates
Term 1 Bellydance Program				
Mon	7.00-8.00pm	Belly Groove Renate	Jndlp	\$120 - 9wks EB - \$110 Feb 6
Tues	7.30-8.30pm	Belly Raqs Jilyan	Scb	\$120 - 9wks EB - \$110 Feb 7
Wed	1.30-2.30pm	Diva Rhythm Renate	Jndlp	\$10 payg ongoing
	7.00-8.00pm	Belly Groove Lissa	Mrly	\$120 - 9wks EB - \$110 Feb 8
	7.00-8.00pm	Belly Groove Renate	Wwk	\$120 - 9wks EB - \$110 Feb 8
Thr	6.30-7.30pm	Belly Groove Lissa	Scb	\$120 - 9wks EB - \$110 Feb 9
	7.45-8.30pm	CT Review	Scb	\$10 payg Feb 9
Term 1 Group Fitness Program				
Tues	6.30-7.15pm	Zumba Gold Renate 10-class card \$100	Scb	\$12 payg ongoing
Wed	8.45-9.45am	Zumba Gold Renate	Wwk	Pay Venue ongoing
Wed	3.15-4.15pm	Zoomers Group Fitness Renate \$4 conc payg	E.Pth	Book with Venue Ongoing
Fri	3.15-4.15pm	Zoomers Group Fitness Renate \$4 conc payg	E.Pth	Book with Venue Ongoing

Bellydance Class Casual Rate:
\$15 paid at class (subject to availability)

EB - Early Bird price – payment due by Feb 3

PAYG: 'Pay as you go' classes run each week from commencement date, unless otherwise specified.



Bellydance

Women in Motion,
Dynamic in Dance!

Bellydance WA

Renate van Dordrecht

M: 0402 243 504

E: dance@bellydancewa.com.au

W: www.bellydancewa.com.au

